



How-To



ConSEL PLUS

Topic: Handling of Recorded Data

System version: 7.x
Document version: 1.1



Content

AKSEL Sp. z o.o.

ul. Lipowa 17, 44-207 Rybnik
Tel: +48-32-42-95-100
Fax: +48-32-42-95-103



1. Overview	2
2. Current data, Historical situation	3
3. Archived data	5
4. Online events	7
5. Historical events	8
6. Recorder	9
7. Event log	11

1. Overview

The ConSEL system provides a number of features to analyse historical data. All events in the system are recorded and can be analysed very quickly and easily thanks to predefined tabs. Of course it is also possible to create your own customised tabs.

All tabs described below can be accessed from the menu and from the tiles in the main application window.

Menu ->Basic Tabs

Menu ->Additional Tabs

Menu ->New Window

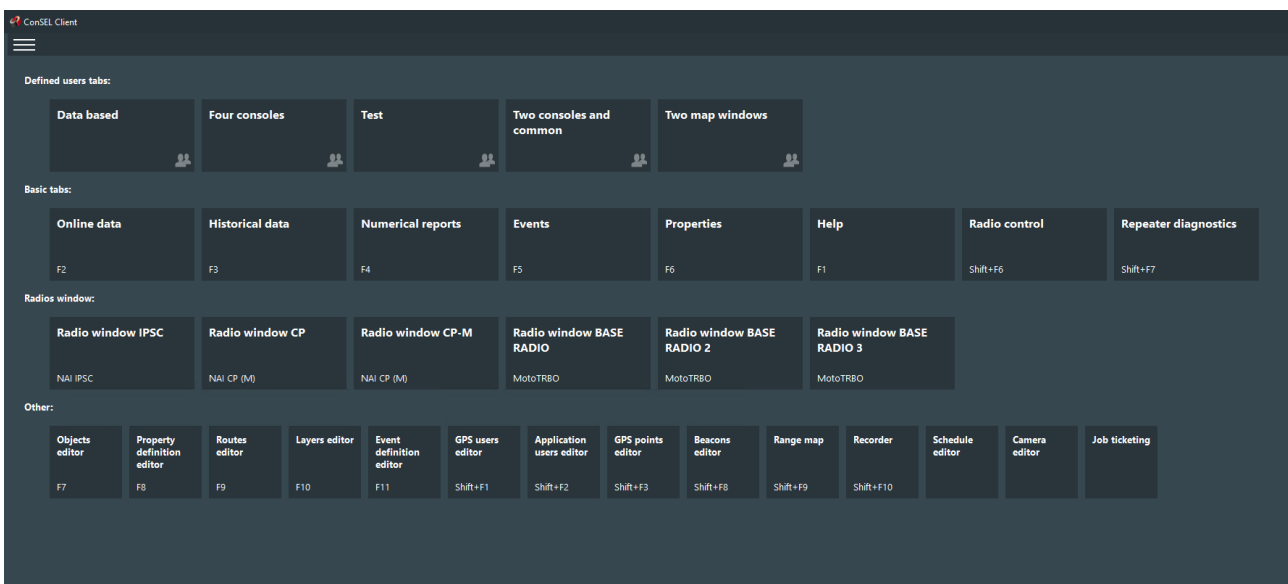


Fig. 1 Access to tabs

2. Current data, Historical situation

The **Current data** tab allows you to analyse the current situation of the system. It consists of data in tables, a map, map inspector, and online events. The contents of the table can be modified at your discretion. Above the data, a toolbar is available to select visible columns, row wrapping, selecting visible objects, stopping the current data, etc. Options are available by right-clicking on the table, from the column pop-up menu and from the toolbar. The map also has its own independent pop-up menu accessible by right-clicking.

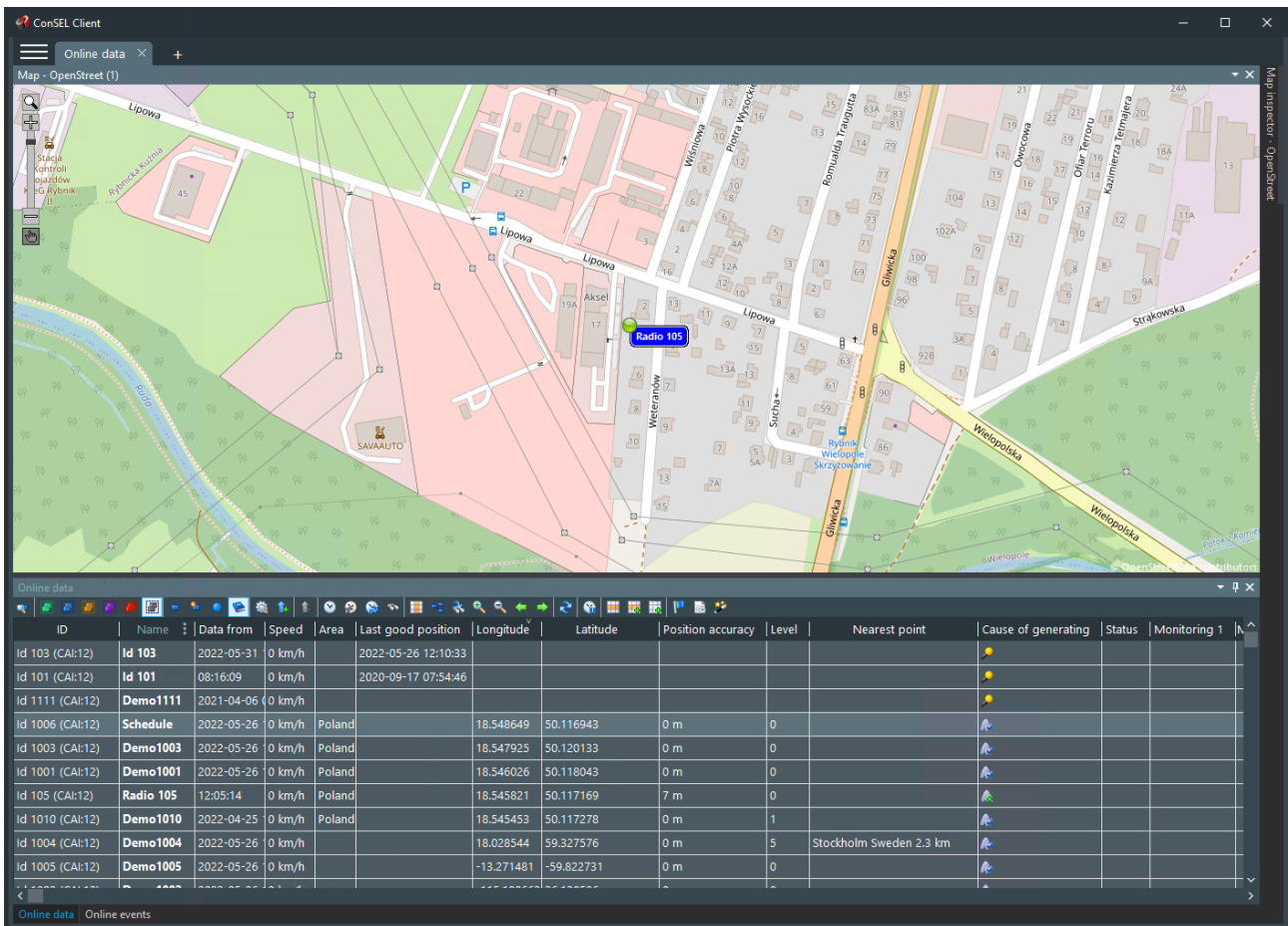


Fig. 2 Current data

From the current data, you can also download the historical situation. This is a 'snapshot' of online data from a selected historical date.

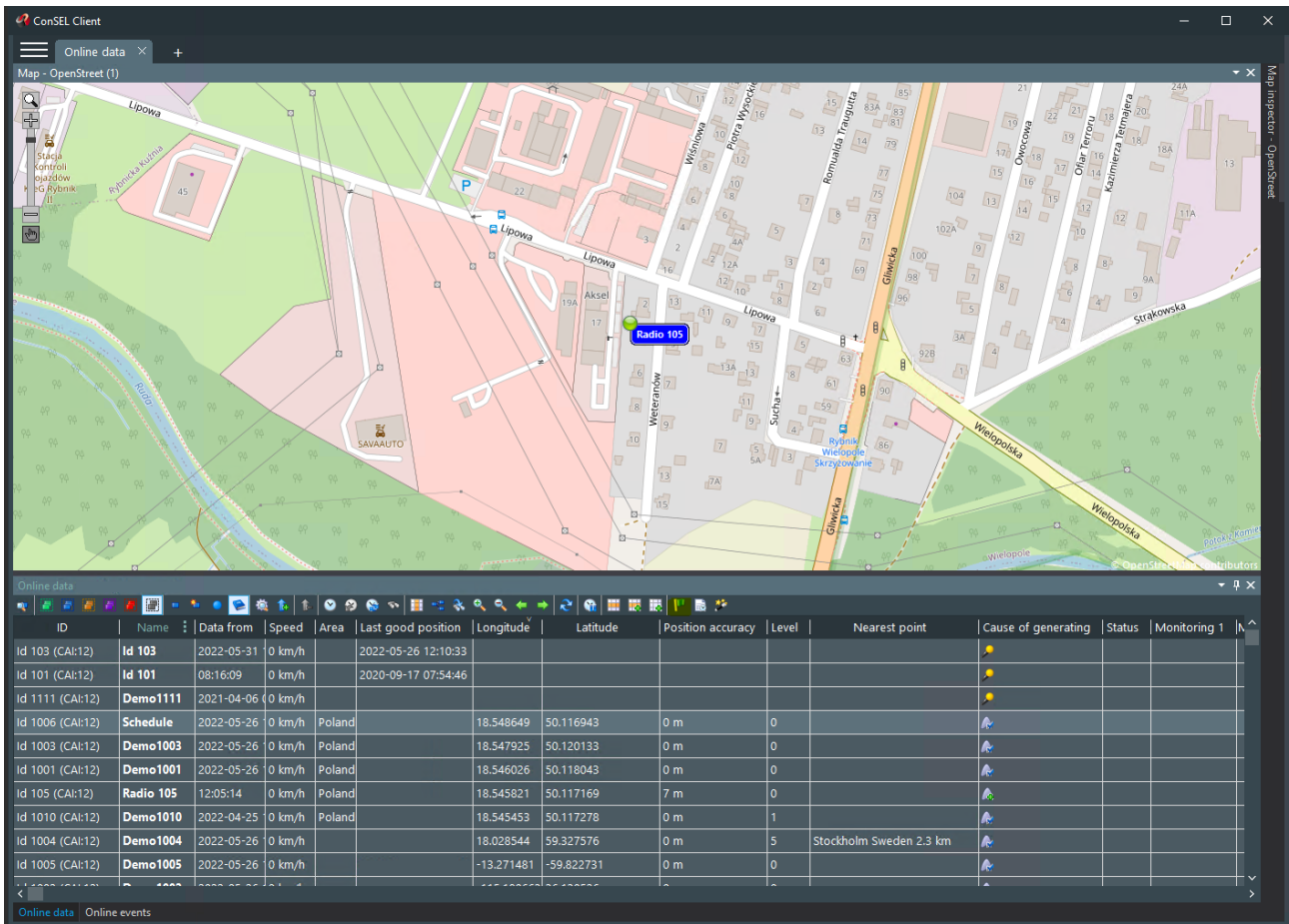


Fig. 3 Selecting historical situation

3. Archived data

The **Archived data** tab allows you to download data packages for a selected object and for a selected time period. The tab area is divided into three parts: parameter selection, report and map with inspector. To correctly generate the report, select the object to be reported on and the time period you are interested in, then click the **'Show history'** button.

It is also possible to retrieve history from an object that is not stored in the system. To do this, enter the radio number manually in the drop-down list box.

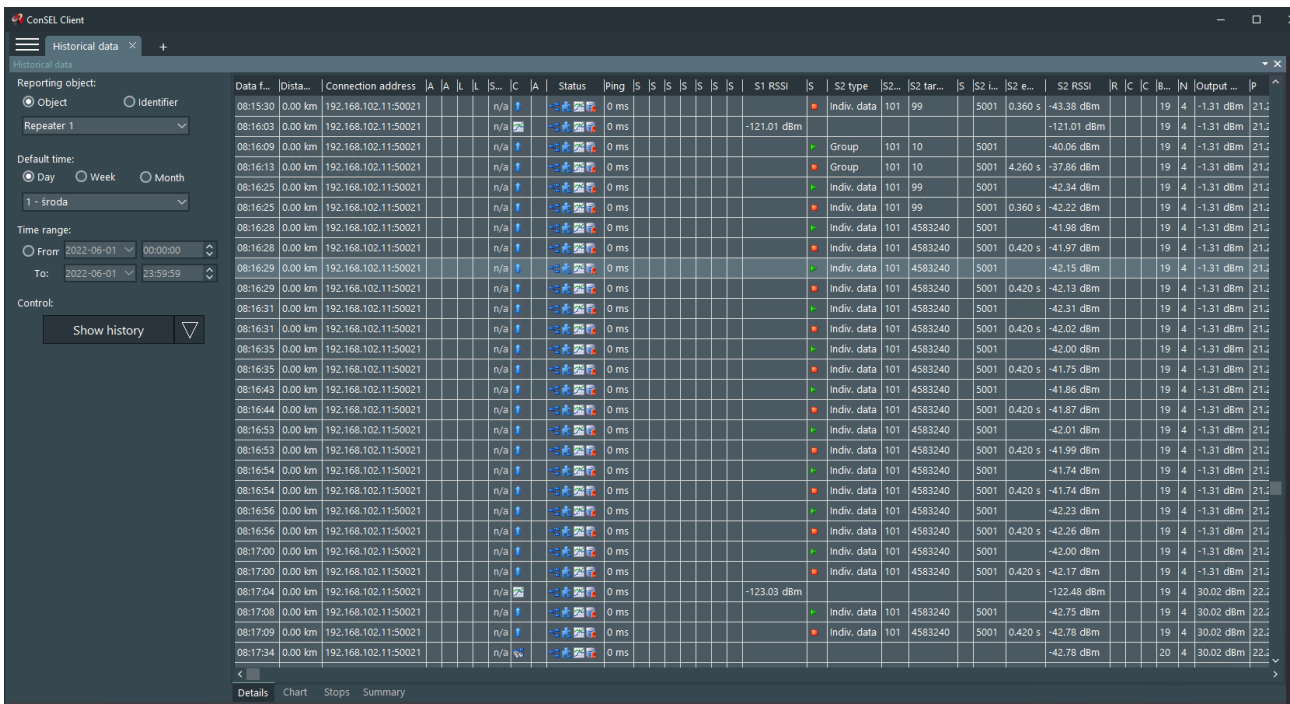


Fig. 4 Archived data

Parameters: object selection from a drop-down list or manual entry, time selection, control.

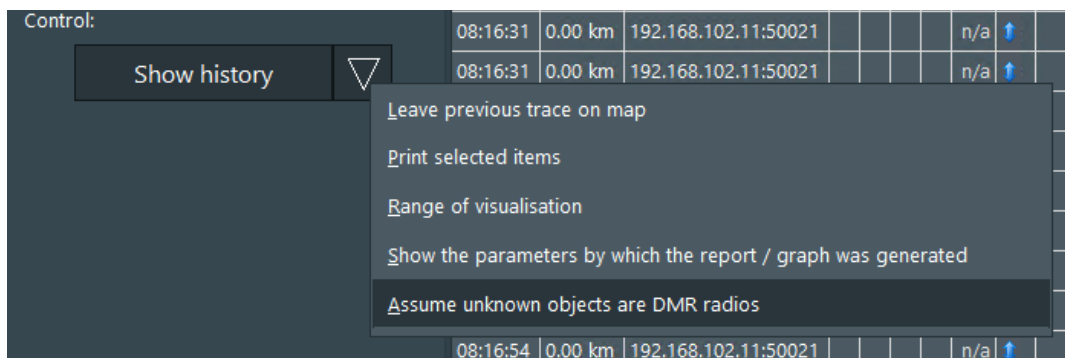


Fig. 5 Additional options for archived data

The report is divided into four independent tabs. The first tab ('Details') shows the arrival time of the 'package' and all other parameters relevant to the facility's equipment statuses. The next tab ('Graph') is graphical presentation of operation of defined devices. The last tab ('Summary') is a summary of all previous reports in a simple table. It contains aggregated and grouped data. It is possible to print the summary data.

Map Inspector:

Tab also gives access to the map inspector. Its form and functionality is the same as that of the current data tab.

Map:

It is also possible to analyse the movement of an object over a set period of time. On the map below the report you can see the entire route covered during that period. It also includes the statuses of selected devices while moving. It is also possible to limit the range of visibility of the route on the map. This is done using the "Visualisation range" slider.

Context menu:

Available by right-clicking, similarly to the current data.

4. Online events

A tab used to analyse current defined events in the system. The tab is a part of the 'current data' tab, it can also exist as an independent window docked to another tab. The table contains user-selectable columns containing information about event occurrence.

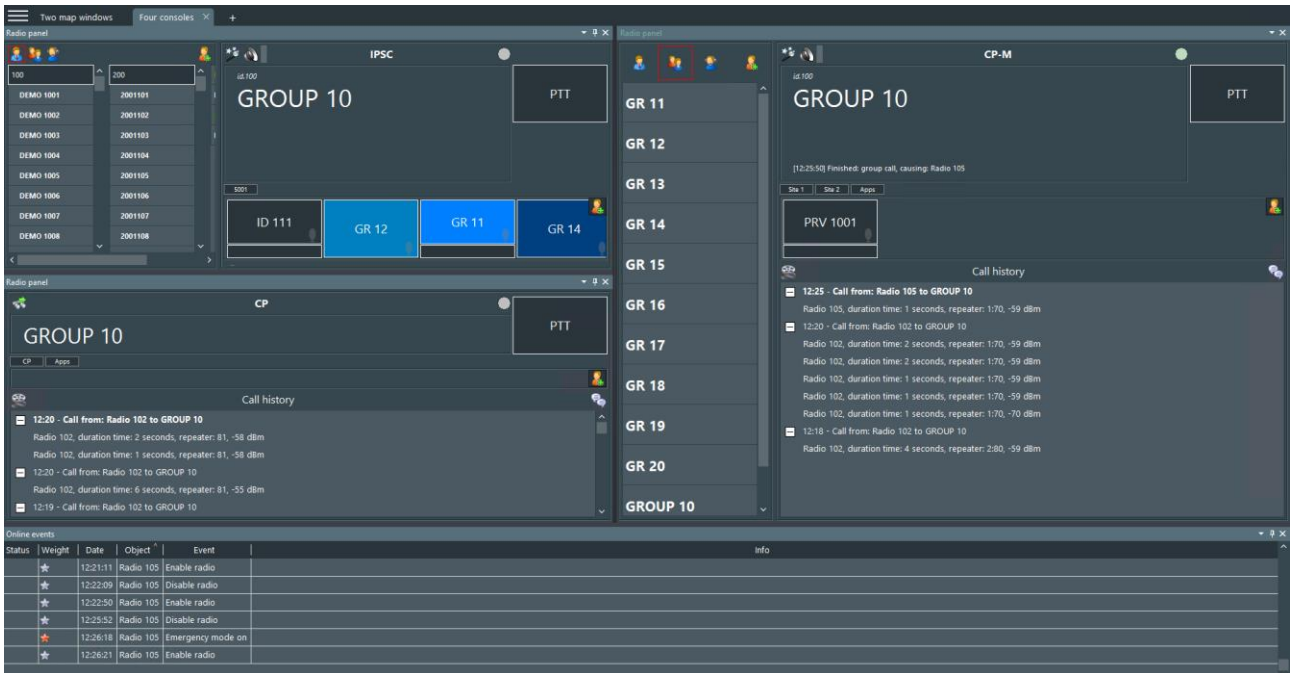
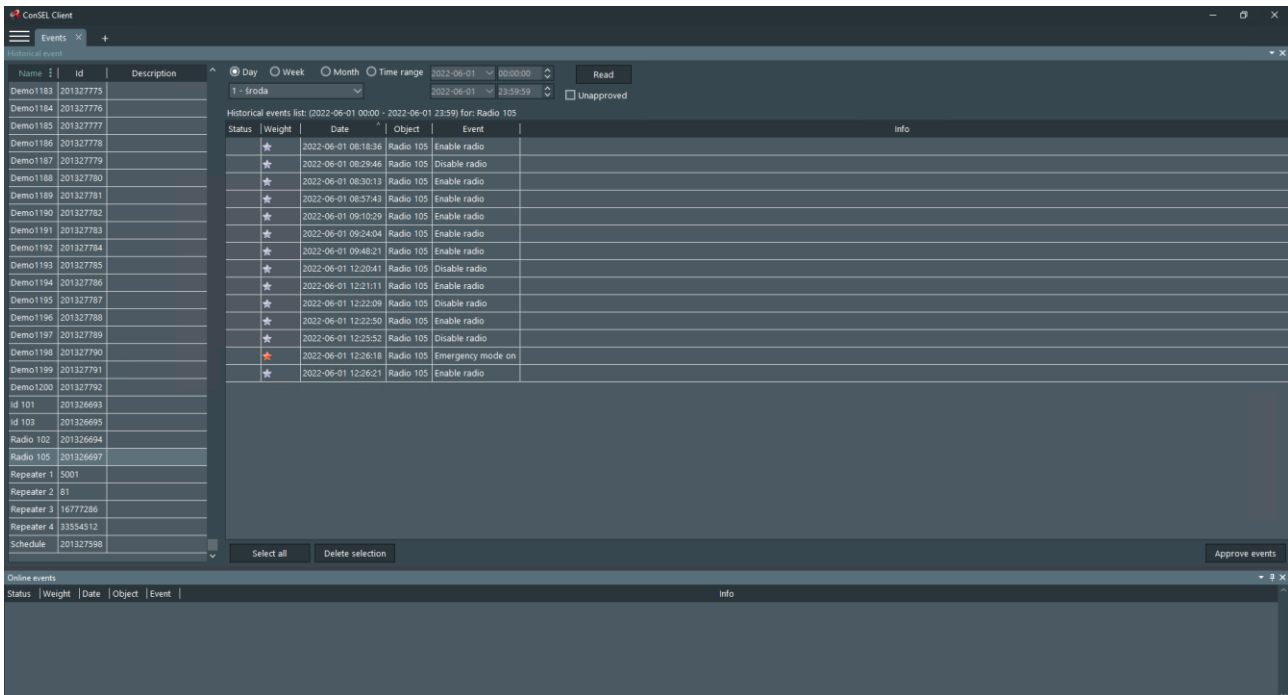


Fig. 6 Online events

5. Historical events

The **Historical events** tab allows you to view all events in the system related to the saved objects for which they occurred. It lets you select the console and time you are interested in. It is also possible to load only events that require approval (option: **Unapproved**). After setting the parameters, select the **Load** button.

The tab is divided into two areas: current (online) and historical events.



The screenshot displays the 'Historical events' tab in the ConSEL Client. The interface is split into two main sections: a list of events on the left and a detailed view of a selected event on the right.

Event List (Left Panel):

Name	Id	Description
Demo1183	201327775	
Demo1184	201327776	
Demo1185	201327777	
Demo1186	201327778	
Demo1187	201327779	
Demo1188	201327780	
Demo1189	201327781	
Demo1190	201327782	
Demo1191	201327783	
Demo1192	201327784	
Demo1193	201327785	
Demo1194	201327786	
Demo1195	201327787	
Demo1196	201327788	
Demo1197	201327789	
Demo1198	201327790	
Demo1199	201327791	
Demo1200	201327792	
Id 101	201326693	
Id 103	201326695	
Radio 102	201326694	
Radio 105	201326697	
Repeater 1	5001	
Repeater 2	81	
Repeater 3	16777286	
Repeater 4	33554512	
Schedule	201327998	

Selected Event Detail (Right Panel):

Historical events list: 2022-06-01 00:00 - 2022-06-01 23:59 for: Radio 105

Status	Weight	Date	Object	Event	Info
★		2022-06-01 08:18:36	Radio 105	Enable radio	
★		2022-06-01 08:29:46	Radio 105	Disable radio	
★		2022-06-01 08:30:13	Radio 105	Enable radio	
★		2022-06-01 08:57:43	Radio 105	Enable radio	
★		2022-06-01 09:10:29	Radio 105	Enable radio	
★		2022-06-01 09:24:04	Radio 105	Enable radio	
★		2022-06-01 09:48:21	Radio 105	Enable radio	
★		2022-06-01 12:20:41	Radio 105	Disable radio	
★		2022-06-01 12:21:11	Radio 105	Enable radio	
★		2022-06-01 12:22:09	Radio 105	Disable radio	
★		2022-06-01 12:22:50	Radio 105	Enable radio	
★		2022-06-01 12:23:52	Radio 105	Disable radio	
★		2022-06-01 12:26:18	Radio 105	Emergency mode on	
★		2022-06-01 12:26:21	Radio 105	Enable radio	

Fig. 7 Historical events tab

6. Recorder

This tab combines a call recorder with an event recorder. It allows you to generate the entire event history for all objects from selected recorders and with the historical event filter enabled or disabled. Once the call history has been generated, you can play it back. Additional options are available from the context menu after selecting a list item.

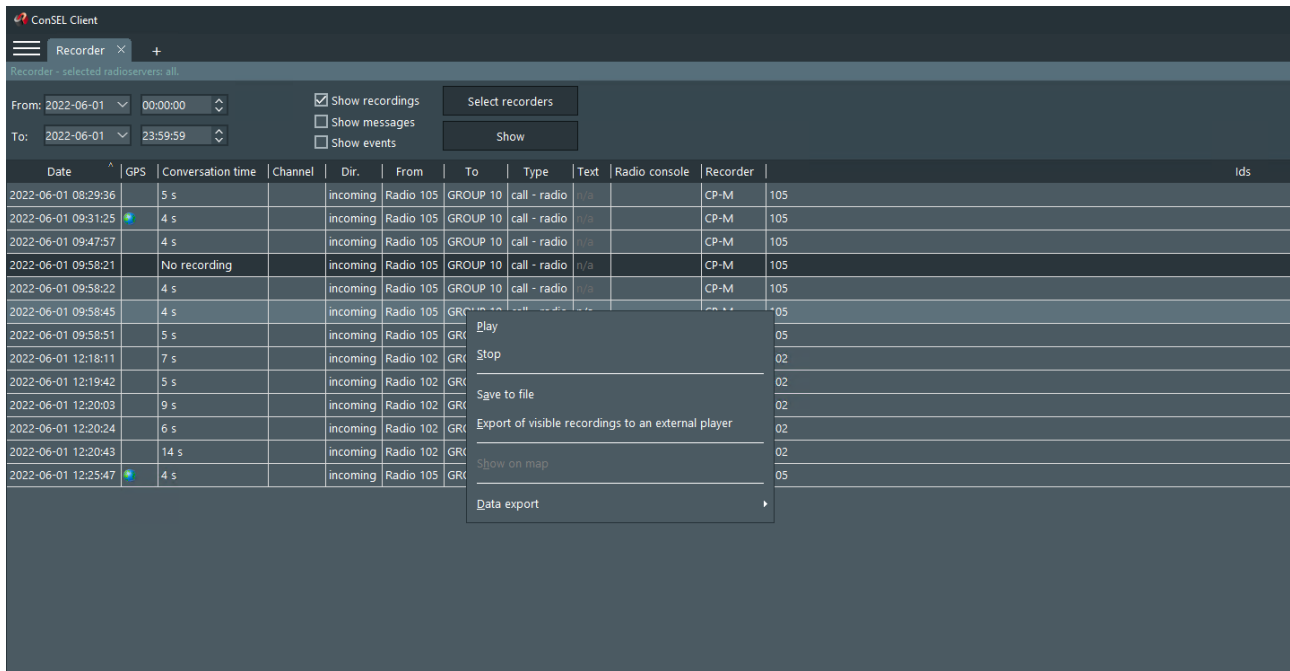


Fig. 8 Recorder

Available options include:

- **Playback** – context menu or slider and buttons at the bottom of the window (prior selection of an item in the table is required)
- **Stop playback** – context menu or slider and buttons at the bottom of the window (it is required to play the recording first)
- **Record to file** – records the selected file to a selected location on the user's disk, it is possible to record several conversations at once. During recording, a **.wave** file and an additional **text file** containing the conversation metadata are created (file name selected by the user)
- **Export data** – export table data to a file.

Important: If you want to generate history only from call archives for a specific recorder, you can select **Menu -> New radio window -> Recorder** and select the desired recorder (Fig. 9). Then generate history from that recorder (Fig. 10). The options are similar as in the 'Recorder' tab.

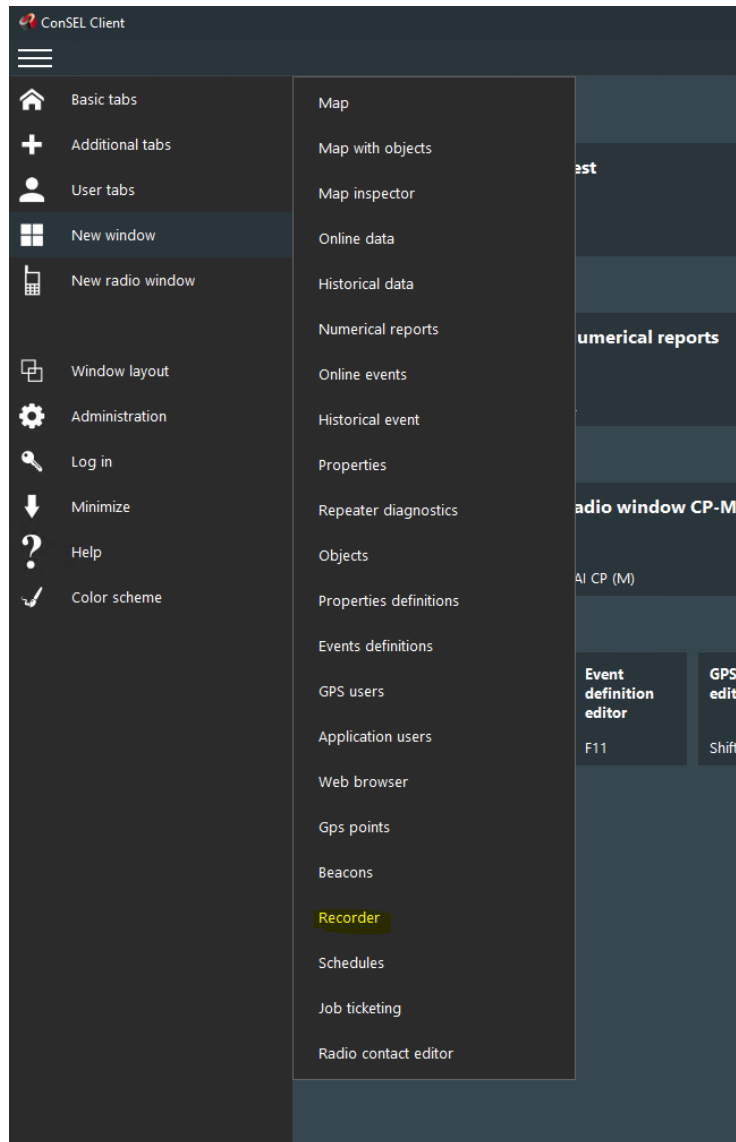


Fig. 9 Menu -> Recorder

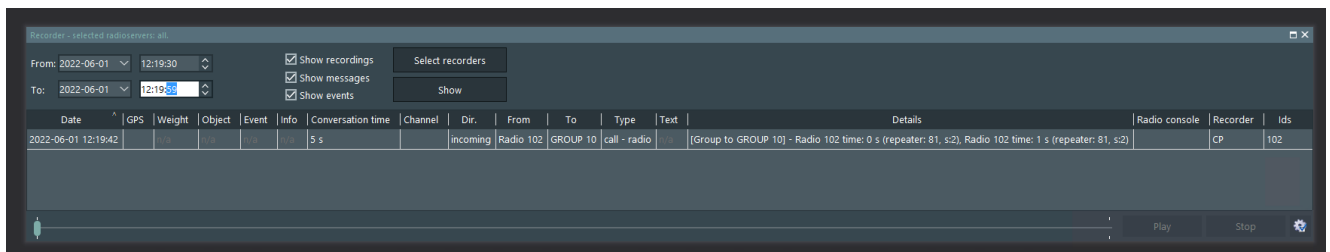


Fig. 10 Separate recorder window

7. Event log

This tab is available from the advanced users menu (administrator rights only). It allows you to view all operations performed on the console. Once the log options have been configured in the 'Program Configuration' window, the log is available from the menu:

Menu ->Administration ->Log

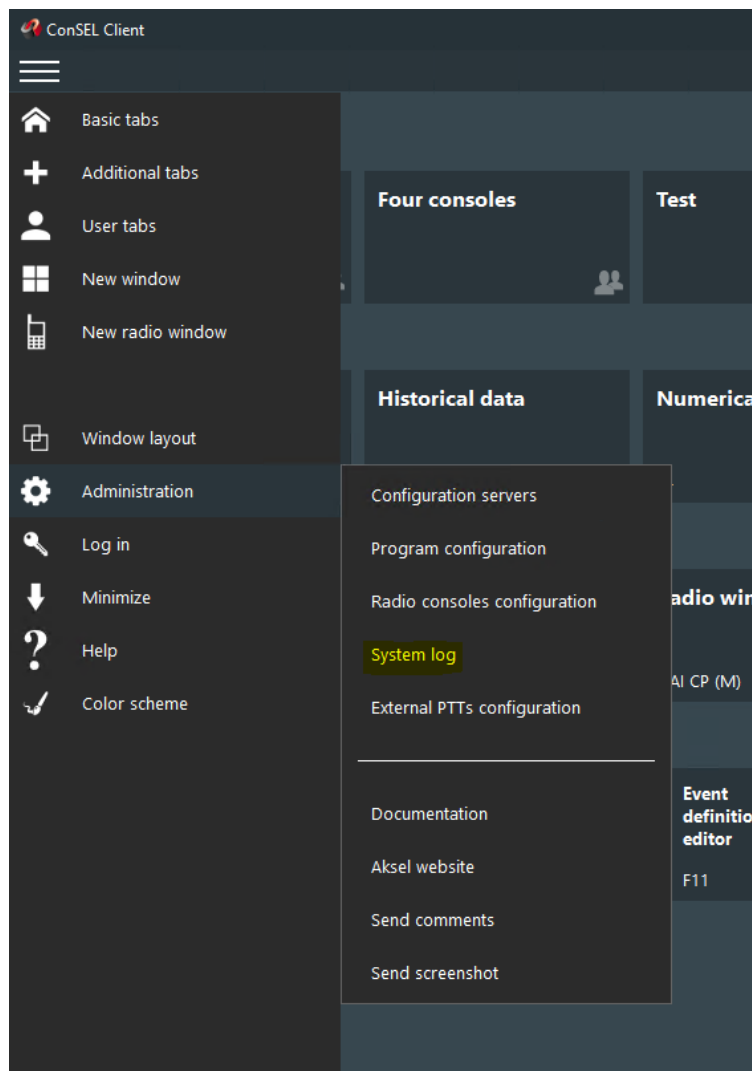


Fig. 11 System log

After opening the window, select the time parameters and click the **Download** button.

Date (server recei...	Date (customer's t...	Thr...	M	Log level	Appli...	Applicati...	System user	IP address	Message
2022-06-01 12:15:21	2022-06-01 12:15:22	17852	1	Information	ConSEL	aksel	m.hetman	172.30.2.140	Zalogowano uzytkownika: aksel
2022-06-01 12:17:44	2022-06-01 12:17:44	5056	16	Information	ConSEL	dispatcher	Administrator	172.30.1.54	Console: IPSC - running
2022-06-01 12:17:44	2022-06-01 12:17:45	5056	17	Information	ConSEL	dispatcher	Administrator	172.30.1.54	Console: CP - running
2022-06-01 12:17:45	2022-06-01 12:17:45	5056	18	Information	ConSEL	dispatcher	Administrator	172.30.1.54	Console: CP-M - running
2022-06-01 12:17:45	2022-06-01 12:17:45	5056	19	Information	ConSEL	dispatcher	Administrator	172.30.1.54	Console: BASE RADIO - running
2022-06-01 12:19:27	2022-06-01 12:19:27	8780	1	Information	ConSEL	aksel	m.hetman	172.30.2.140	Zalogowano uzytkownika: aksel
2022-06-01 12:19:34	2022-06-01 12:19:35	8780	2	Information	ConSEL	aksel	m.hetman	172.30.2.140	Konsola: VBOX CP - uruchomiona
2022-06-01 12:19:42	2022-06-01 12:19:43	8780	3	Information	ConSEL	aksel	m.hetman	172.30.2.140	GIC(Gosia): Zalogowano jako kontakt Gosia/172.30.2.140
2022-06-01 12:20:23	2022-06-01 12:20:24	8780	4	Information	ConSEL	aksel	m.hetman	172.30.2.140	Konsola: VBOX CP - wyłączenie
2022-06-01 12:21:39	2022-06-01 12:21:40	11044	1	Information	ConSEL	dispatcher	m.hetman	172.30.2.140	Zalogowano uzytkownika: dispatcher
2022-06-01 12:24:42	2022-06-01 12:24:42	5056	20	Information	ConSEL	dispatcher	Administrator	172.30.1.54	Console: BASE RADIO - turn off
2022-06-01 12:25:06	2022-06-01 12:25:06	5056	21	Information	ConSEL	dispatcher	Administrator	172.30.1.54	Console: CP-M - critical alarm disable. Radio 105
2022-06-01 12:26:24	2022-06-01 12:26:25	5056	22	Information	ConSEL	dispatcher	Administrator	172.30.1.54	Console: CP-M - critical alarm disable. Radio 105
2022-06-01 12:27:22	2022-06-01 12:27:22	5056	23	Information	ConSEL	dispatcher	Administrator	172.30.1.54	Console: IPSC - turn off
2022-06-01 12:27:22	2022-06-01 12:27:22	5056	24	Information	ConSEL	dispatcher	Administrator	172.30.1.54	Console: CP - turn off
2022-06-01 12:27:22	2022-06-01 12:27:22	5056	25	Information	ConSEL	dispatcher	Administrator	172.30.1.54	Console: CP-M - turn off

Fig. 12 System log